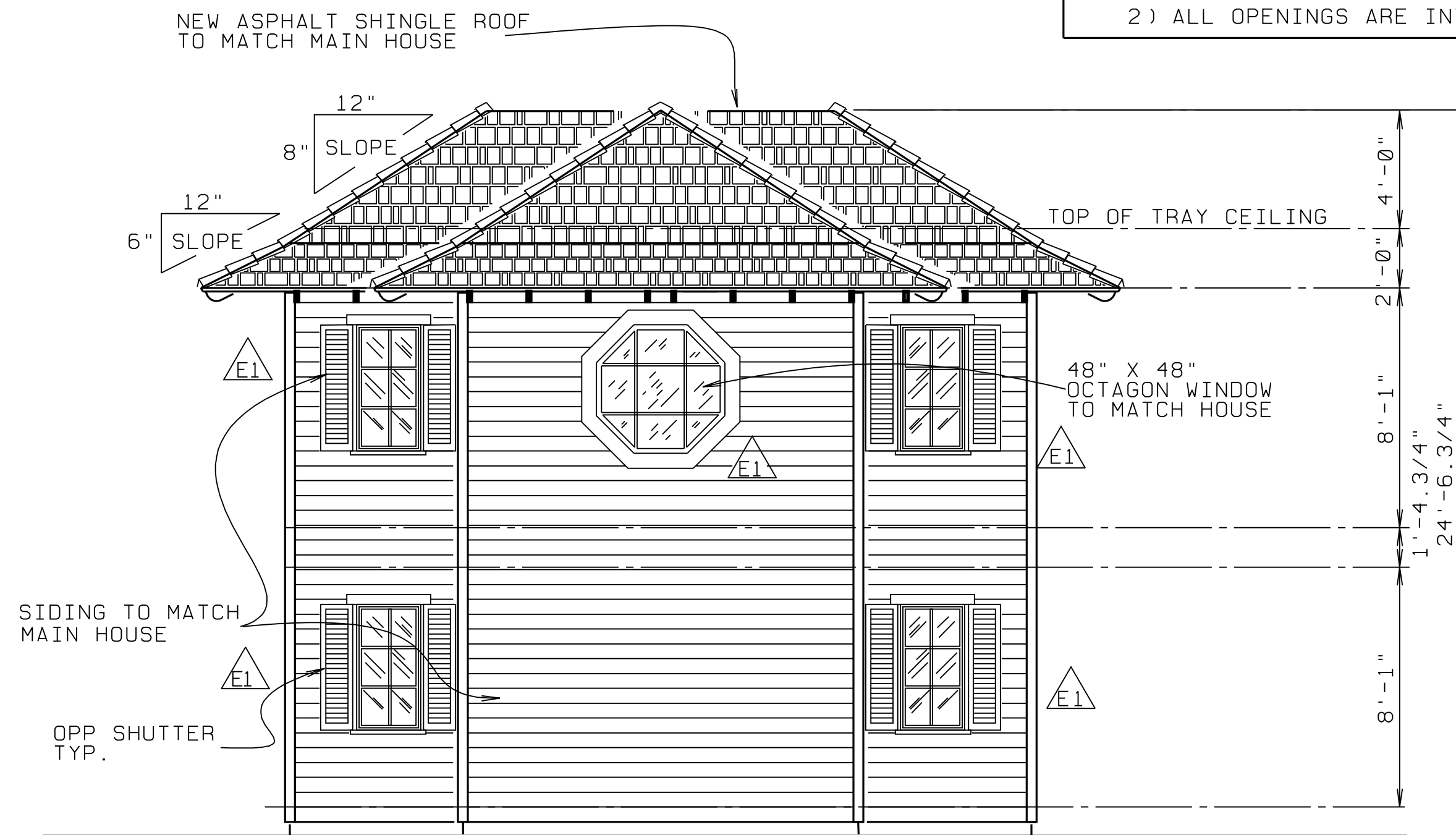




ACTUAL DESIGN PRESSURES FOR ALL EXTERIOR WINDOWS, DOORS, GARAGE DOORS AND SIMILAR ENVELOPE ELEMENTS				
OPENING AREA IN SQ. FT.	INTERIOR ZONE $\triangle$		END ZONE (NOTE #1) $\triangle$	
	POSITIVE	NEGATIVE	POSITIVE	NEGATIVE
$\triangle$ 0 TO 15	+ 35.3 psf	- 38.2 psf	+ 35.3 psf	- 47.2 psf
$\triangle$ 15 TO 20	+ 34.5 psf	- 37.5 psf	+ 34.5 psf	- 45.6 psf
$\triangle$ 20 TO 35	+ 33.7 psf	- 36.7 psf	+ 33.7 psf	- 44.0 psf
$\triangle$ 35 TO 50	+ 32.6 psf	- 35.7 psf	+ 32.6 psf	- 41.8 psf
$\triangle$ 50 TO 100	+ 31.6 psf	- 34.6 psf	+ 31.6 psf	- 39.8 psf
$\triangle$ 100 AND UP	+ 30.0 psf	- 33.0 psf	+ 30.0 psf	- 36.7 psf
$\triangle$ GARAGE DOOR 9' X 7' =	+ 31.0 / -35.1 PER TABLE 1606.2E OF F.B.C. 2001			
$\triangle$ GARAGE DOOR 16' X 8' =	+ 29.7 / -33.1 PER TABLE 1606.2E OF F.B.C. 2001			

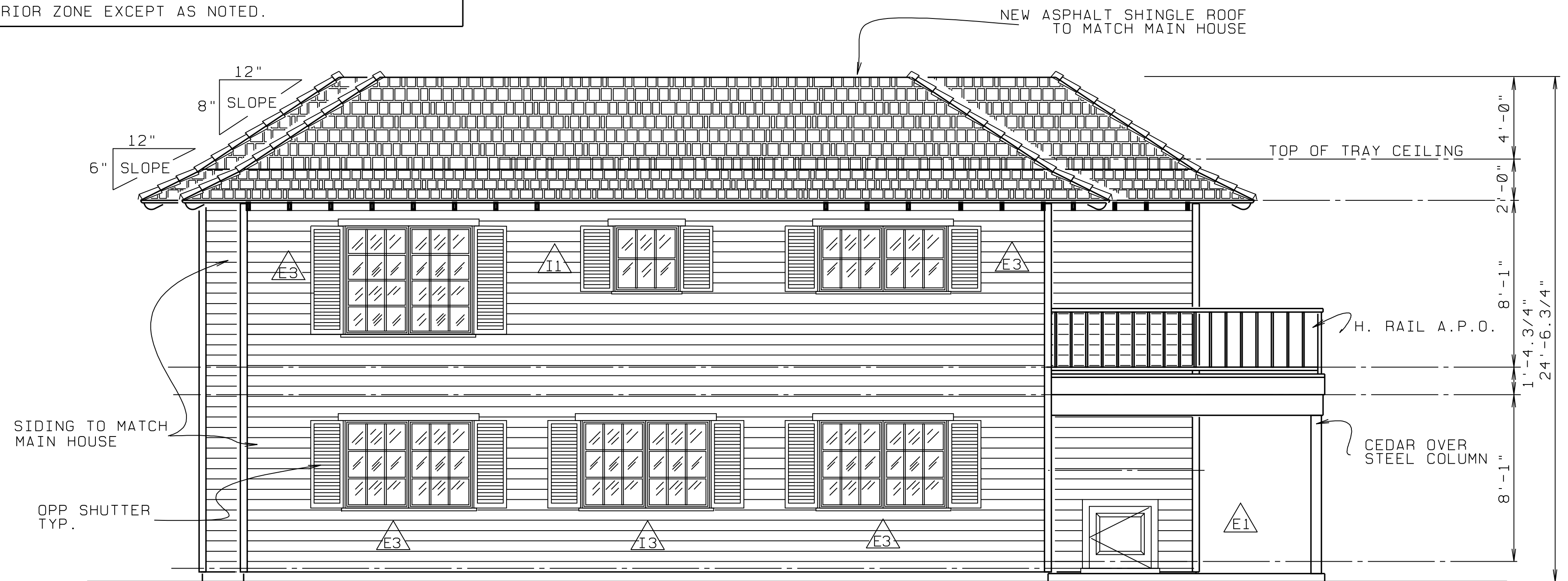
TABLE 1602.2B OF F.B.C. 2001

NOTE:  
 1) END ZONE CALCULATION SHALL BE DETERMINED BY THE TOP OF BEAM HEIGHT AT LOCATION OF OPENING LESS 3' FROM CORNER FOR 8'-0" HEIGHT, 4" FROM CORNER FOR 10'-0" HGT, 5" FROM CORNER FOR 12' HGT, 6" FOR 14' HGT.  
 2) ALL OPENINGS ARE INTERIOR ZONE EXCEPT AS NOTED.



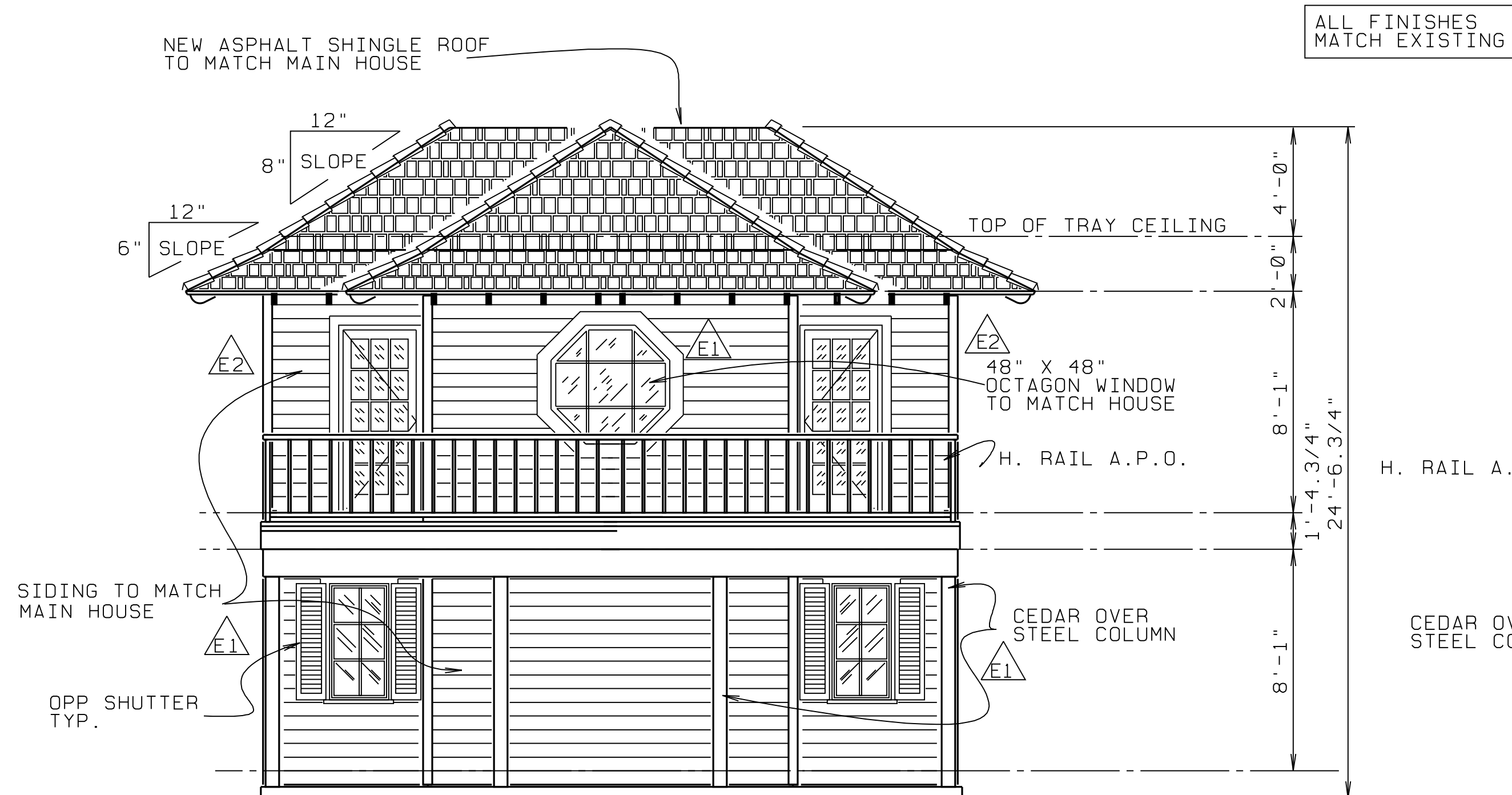
### FRONT ELEVATION

GARAGE WING - SCALE: 1/4" = 1'-0" -



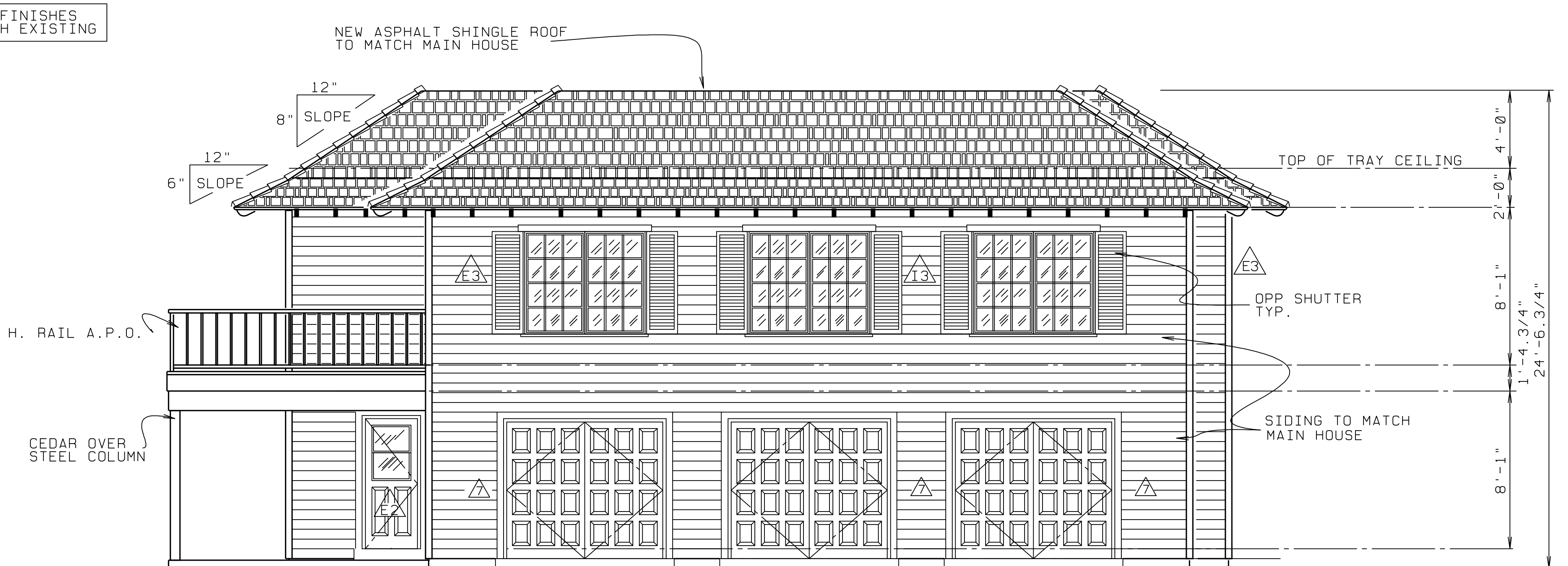
### RIGHT SIDE ELEVATION

GARAGE WING - SCALE: 1/4" = 1'-0" -



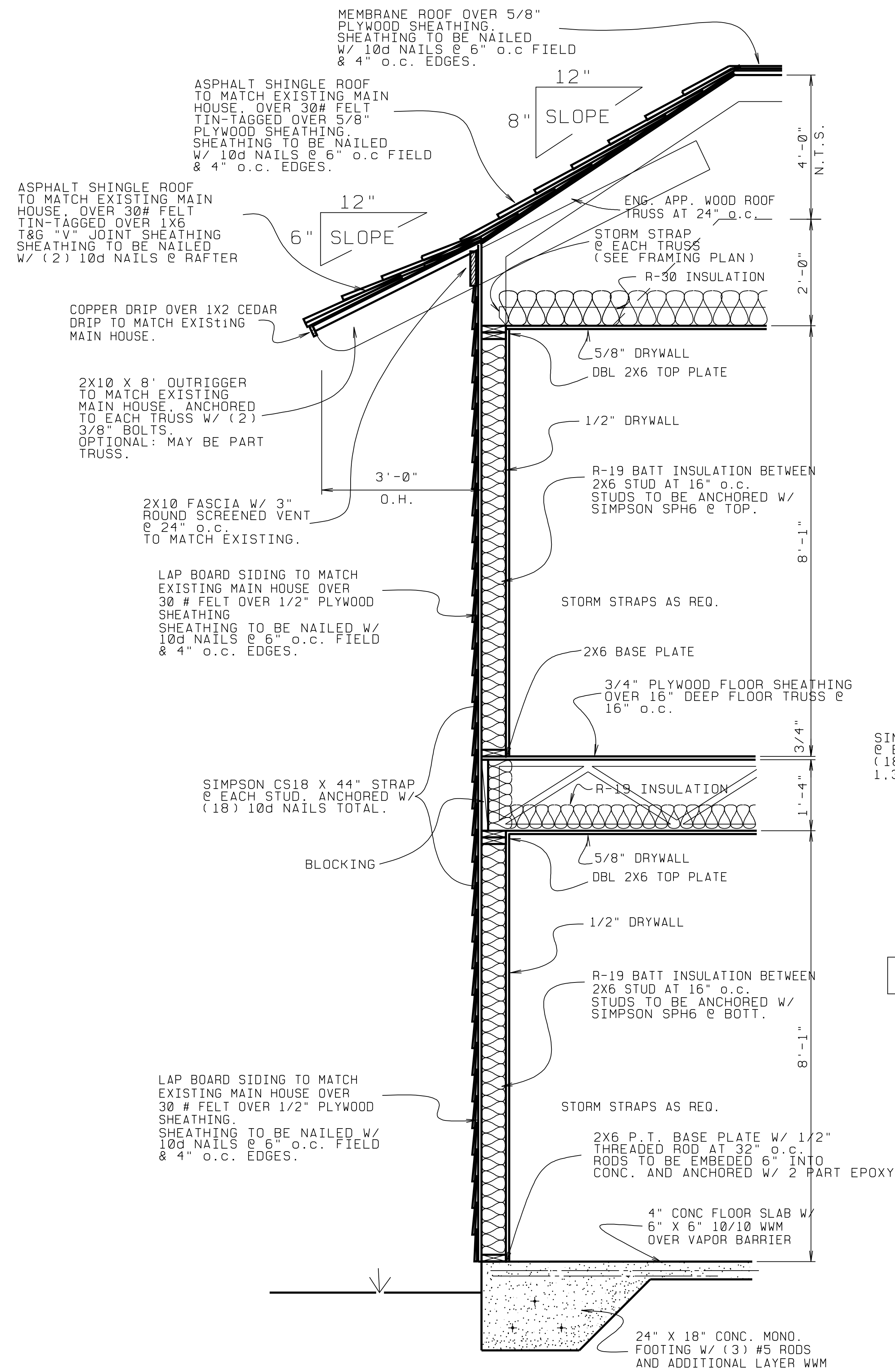
### REAR ELEVATION

GARAGE WING - SCALE: 1/4" = 1'-0" -



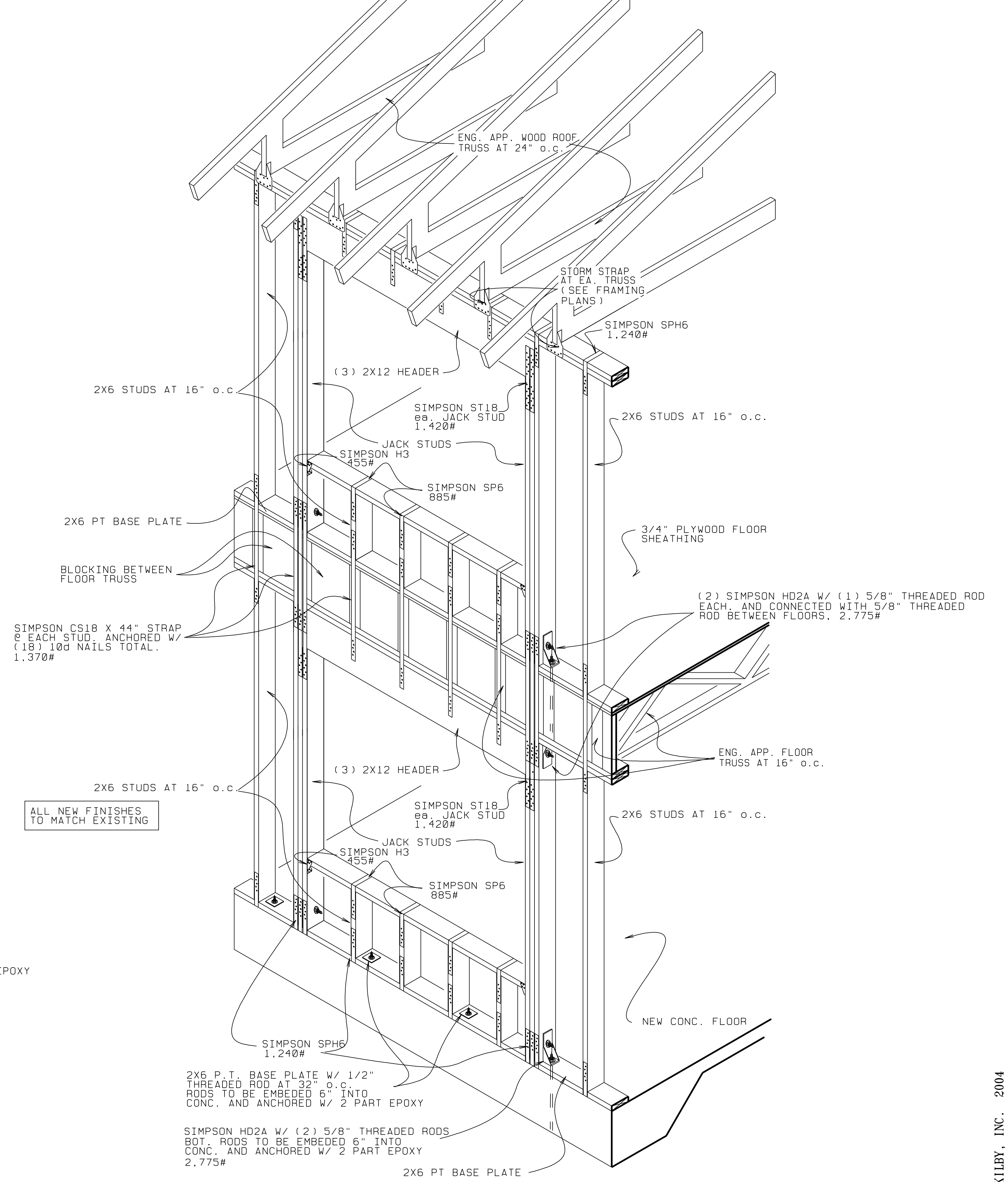
### LEFT SIDE ELEVATION

GARAGE WING - SCALE: 1/4" = 1'-0" -



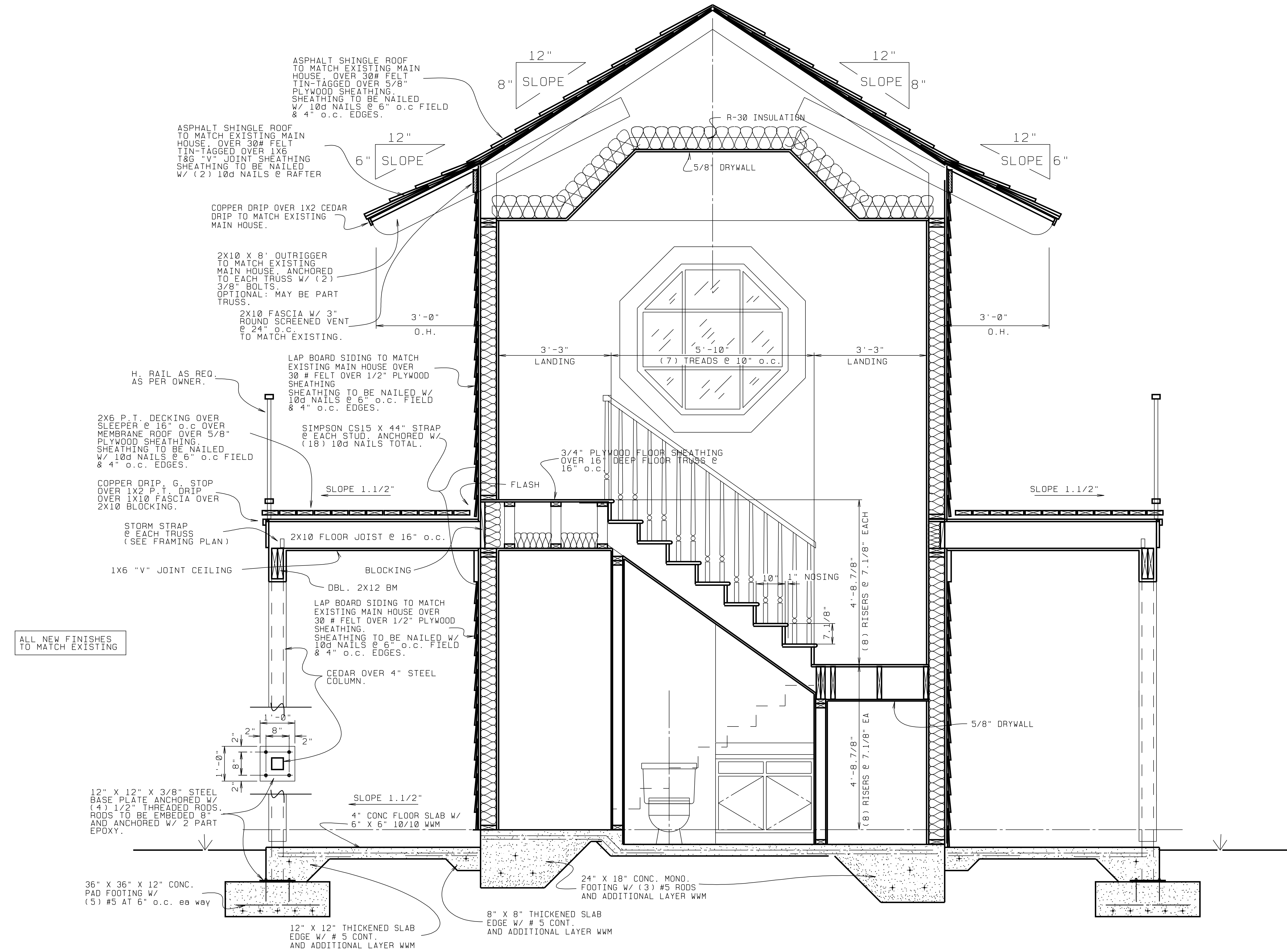
TYP. WALL SEC.

- 3/4" = 1'-0" -



FRAME OPENING DETAIL

- 3/4" = 1'-0" -



PATIO & STAIR WALL SEC.

- 3/4" = 1'-0" -