

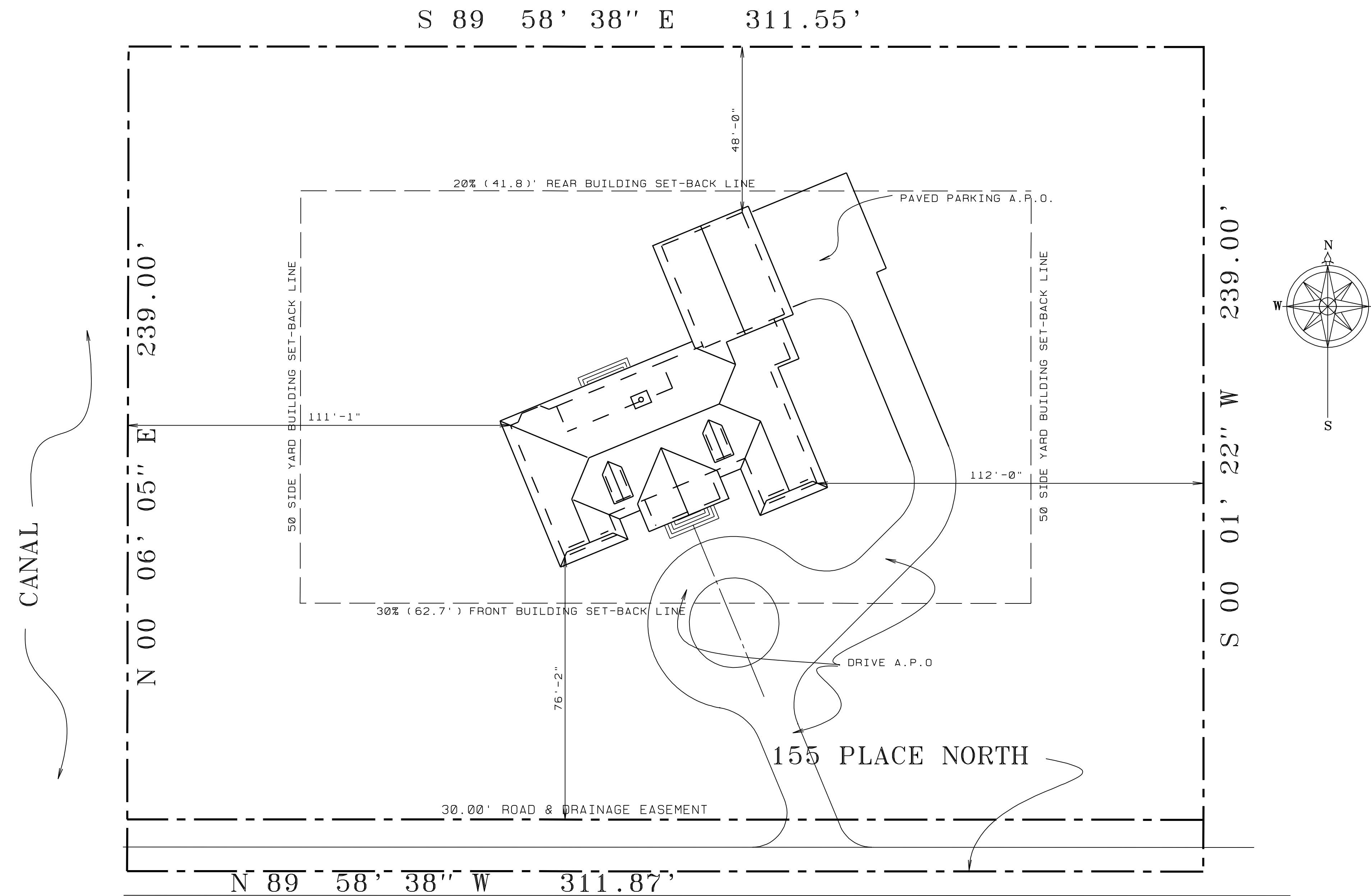
A NEW RESIDENCE FOR:

PALM BEACH COUNTY,

FLORIDA

TABLE OF CONTENTS:

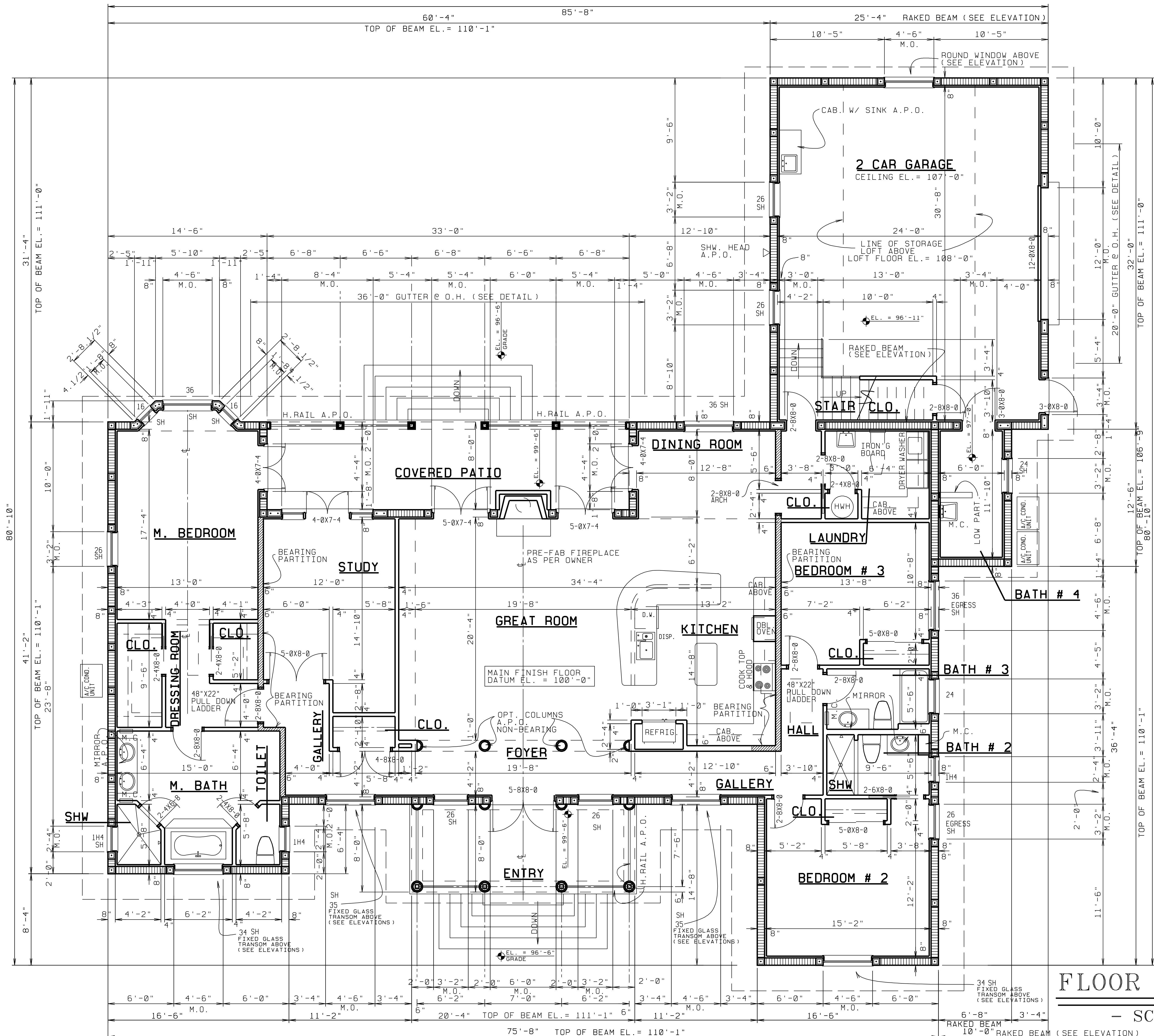
1. SITE AND ROOF PLAN
2. FOUNDATION PLAN
3. FLOOR FRAMING PLAN
4. FLOOR PLAN
5. CEILING PLAN
6. LINTEL PLAN
7. ROOF FRAMING PLAN
8. EXT. ELEVATIONS
9. EXT. ELEVATIONS
10. WALL SECTIONS
11. WALL SECTIONS
12. WALL SECTIONS
13. WALL SECTIONS
14. WALL SECTIONS
- 14a. WALL SECTIONS
15. ELECTRICAL PLAN
16. LOFT PLAN & MECHANICAL



SITE & ROOF PLAN

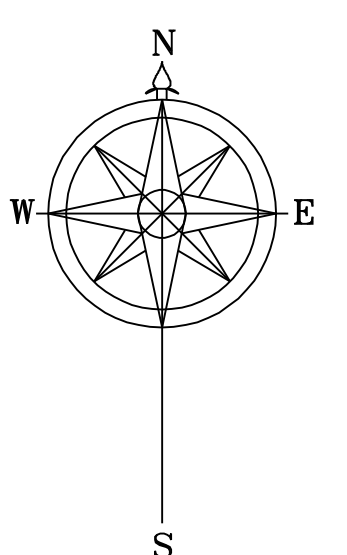
- SCALE: 1" = 20'-0" -

REVISION	DATE	BY
1	9/19/03	LK
2	07/03	LK
3	12/3/03	LK



ALL GLASS TO BE TINTED

LIVING AREA	2,734 SQ. FT.
MEDIA - GARAGE	884
STORAGE LOFT	360
COVERED PATIO & ENTRY	427
TOTAL AREA	4,405 SQ. FT.



FLOOR PLAN

- SCALE: 1/4" = 1'-0" -

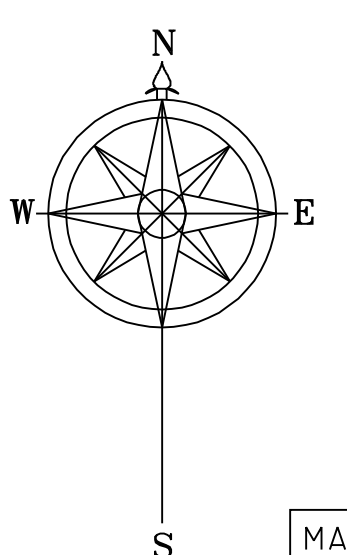
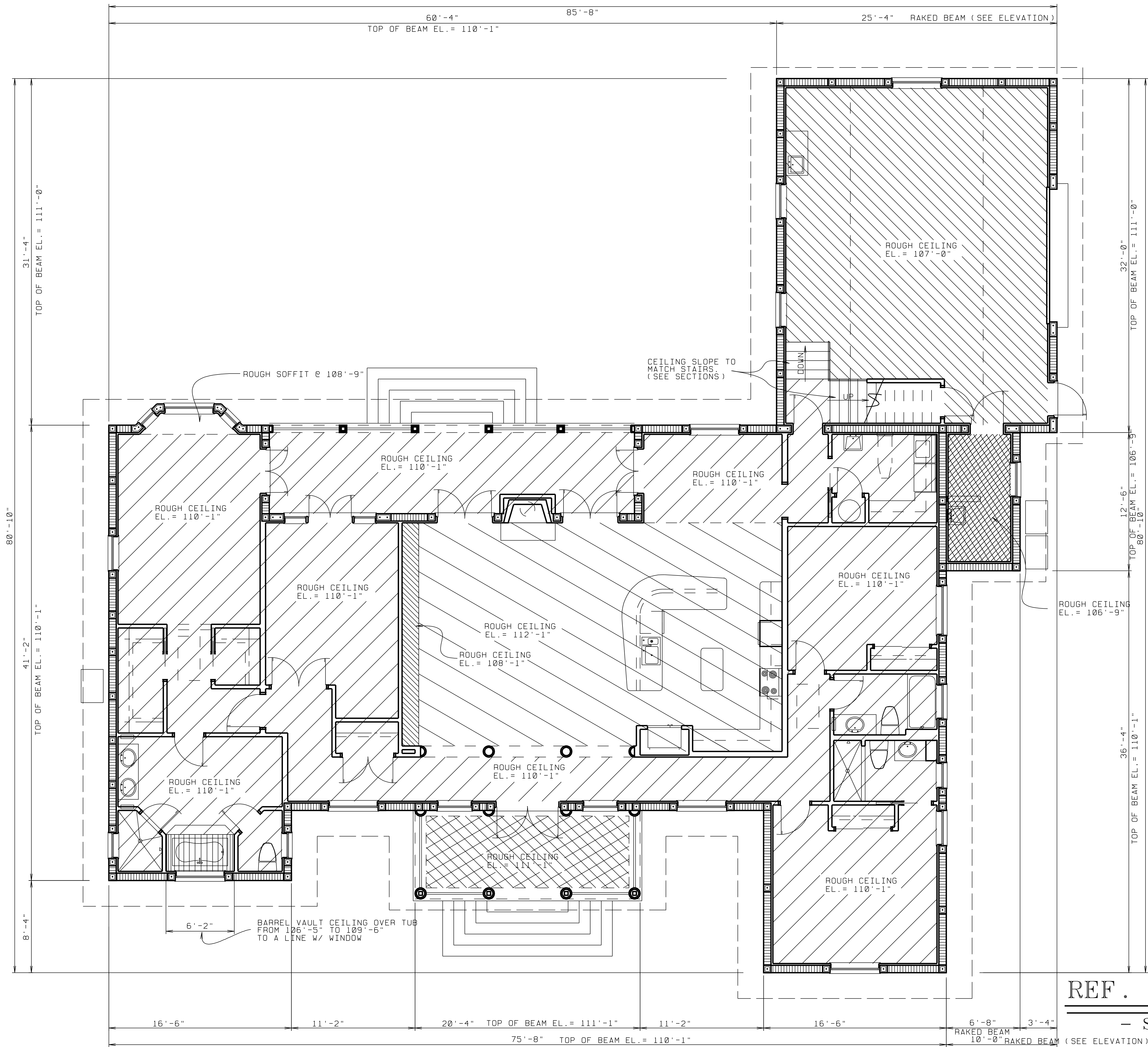
L. BRUCE KILBY, INC. 2003

PROJ: 03032	REVISD:	BY:
DATE: 02/03	9/18/03	LK
DRAWN BY: LK	12/3/03	LK

4 of 16

A NEW RESIDENCE FOR:
PALM BEACH COUNTY, FLORIDA

L. BRUCE KILBY, DESIGNS.



MAIN FINISH FLOOR
DATUM EL. = 100'-0"

REF. CEILING PLAN

— SCALE: 1/4" = 1'-0" —

© L. BRUCE KILBY, INC. 2003

PROJ: 03032	REVISOR:	BY:
DATE: 02/20/03	9/18/03	LJK
	12/23/03	LJK
SHEET: 5 of 16	DRAWN BY: LJK	

A NEW RESIDENCE FOR:

PALM BEACH COUNTY, FLORIDA

L. BRUCE KILBY, DESIGNS.



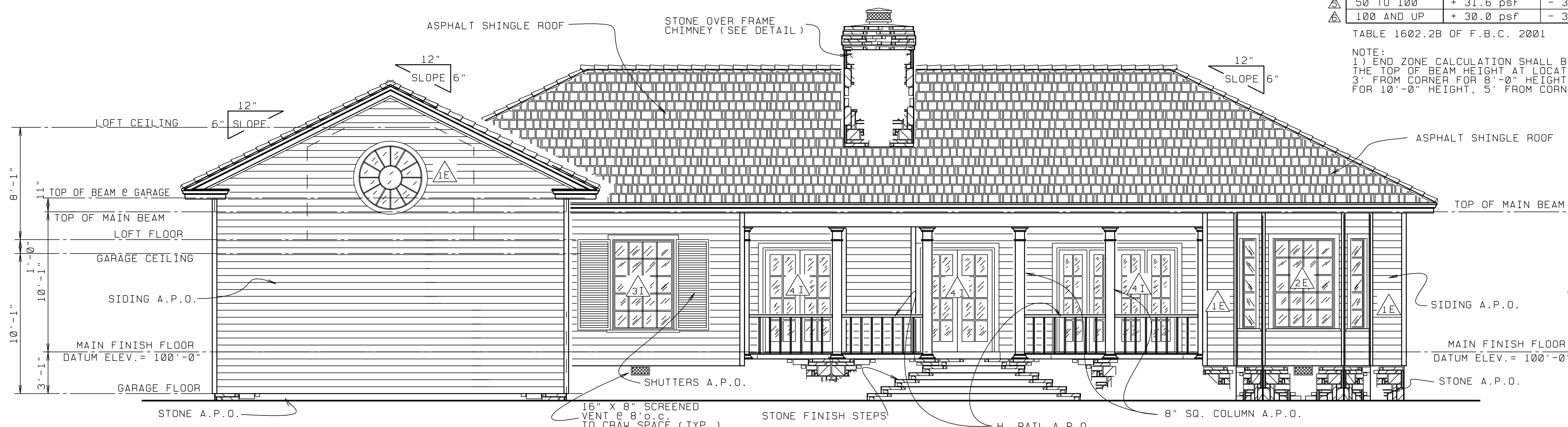
FRONT ELEVATION

- SCALE: 1/4" = 1'-0" -

OPENING AREA IN SQ. FT.	INTERIOR ZONE Δ		END ZONE (NOTE #1) Δ	
	POSITIVE	NEGATIVE	POSITIVE	NEGATIVE
Δ 0 TO 15	+ 35.3 psf	- 38.2 psf	+ 35.3 psf	- 47.2 psf
Δ 15 TO 20	+ 34.5 psf	- 37.5 psf	+ 34.5 psf	- 45.6 psf
Δ 20 TO 35	+ 33.7 psf	- 36.7 psf	+ 33.7 psf	- 44.0 psf
Δ 35 TO 50	+ 32.6 psf	- 35.7 psf	+ 32.6 psf	- 41.8 psf
Δ 50 TO 100	+ 31.6 psf	- 34.6 psf	+ 31.6 psf	- 39.8 psf
Δ 100 AND UP	+ 30.0 psf	- 33.0 psf	+ 30.0 psf	- 36.7 psf

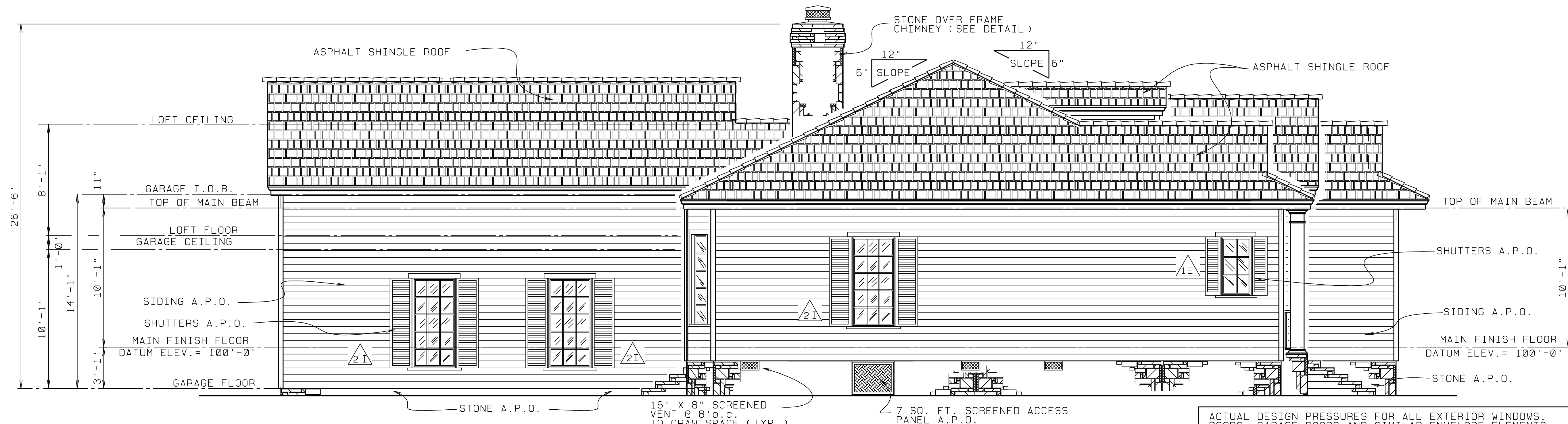
TABLE 1602.2B OF F.B.C. 2001

NOTE:
 1) END ZONE CALCULATION SHALL BE DETERMINED BY THE TOP OF BEAM HEIGHT AT LOCATION OF OPENING
 3' FROM CORNER FOR 8'-0" HEIGHT, 4' FROM CORNER FOR 10'-0" HEIGHT, 5' FROM CORNER FOR 12' HEIGHT.



REAR ELEVATION

- SCALE: 1/4" = 1'-0" -



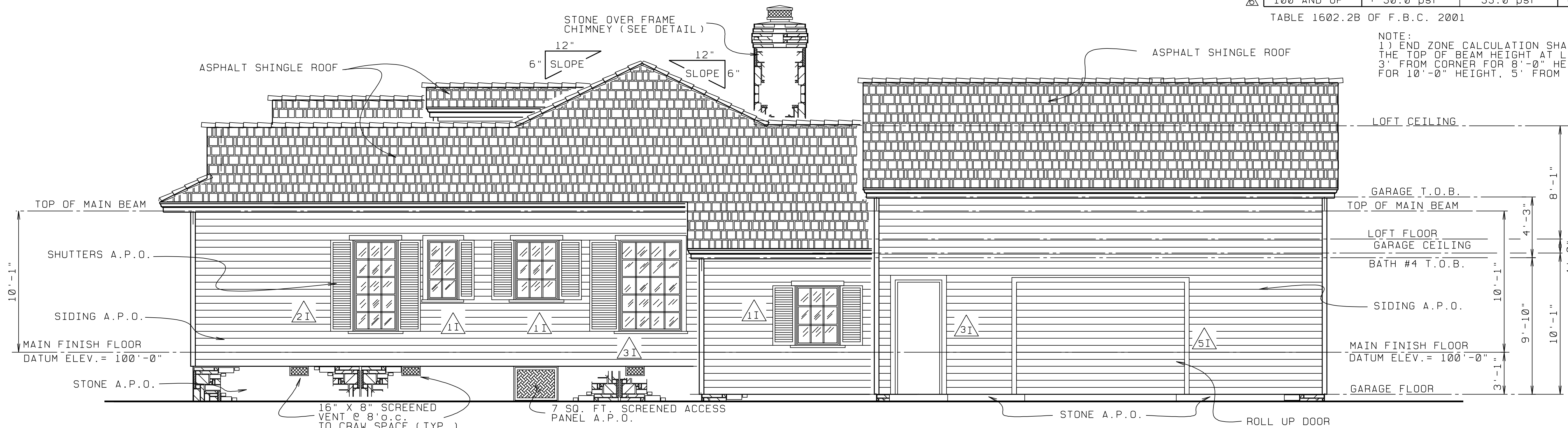
LEFT SIDE ELEVATION - SCALE: 1/4" = 1'-0" -

ACTUAL DESIGN PRESSURES FOR ALL EXTERIOR WINDOWS, DOORS, GARAGE DOORS AND SIMILAR ENVELOPE ELEMENTS

OPENING AREA IN SQ. FT.	INTERIOR ZONE Δ		END ZONE (NOTE #1) Δ	
	POSITIVE	NEGATIVE	POSITIVE	NEGATIVE
Δ 0 TO 15	+ 35.3 psf	- 38.2 psf	+ 35.3 psf	- 47.2 psf
Δ 15 TO 20	+ 34.5 psf	- 37.5 psf	+ 34.5 psf	- 45.6 psf
Δ 20 TO 35	+ 33.7 psf	- 36.7 psf	+ 33.7 psf	- 44.0 psf
Δ 35 TO 50	+ 32.6 psf	- 35.7 psf	+ 32.6 psf	- 41.8 psf
Δ 50 TO 100	+ 31.6 psf	- 34.6 psf	+ 31.6 psf	- 39.8 psf
Δ 100 AND UP	+ 30.0 psf	- 33.0 psf	+ 30.0 psf	- 36.7 psf

TABLE 1602.2B OF F.B.C. 2001

NOTE:
 1) END ZONE CALCULATION SHALL BE DETERMINED BY THE TOP OF BEAM HEIGHT AT LOCATION OF OPENING 3' FROM CORNER FOR 8'-0" HEIGHT, 4' FROM CORNER FOR 10'-0" HEIGHT, 5' FROM CORNER FOR 12' HEIGHT.



RIGHT SIDE ELEVATION - SCALE: 1/4" = 1'-0" -